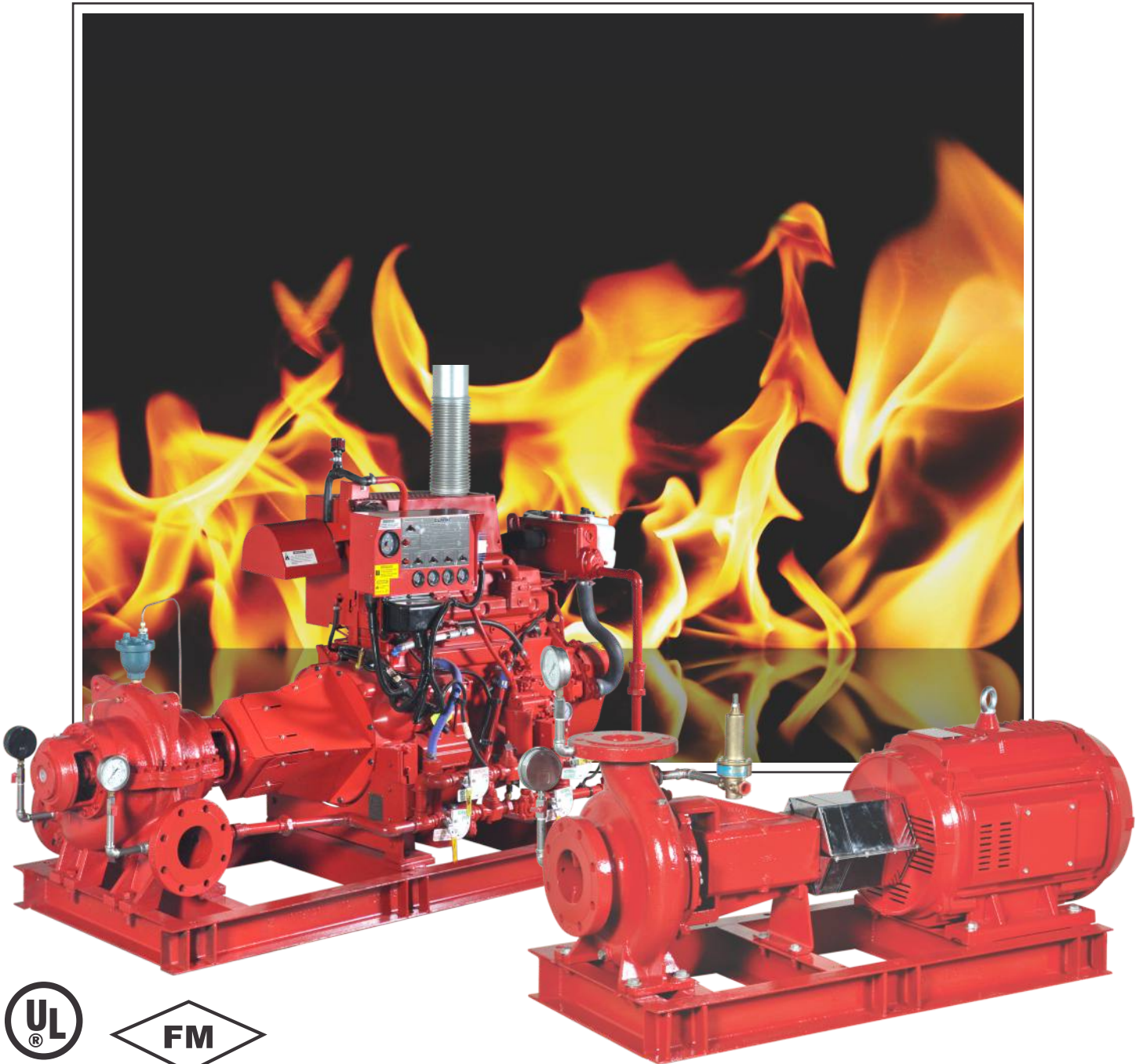
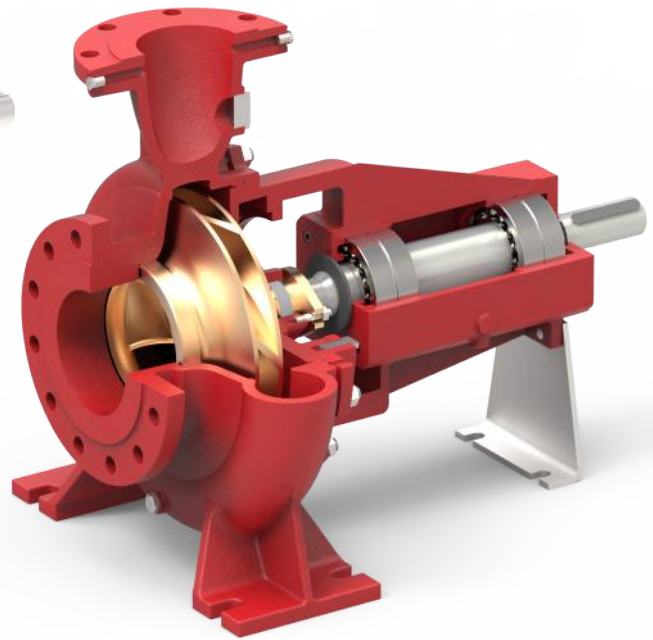
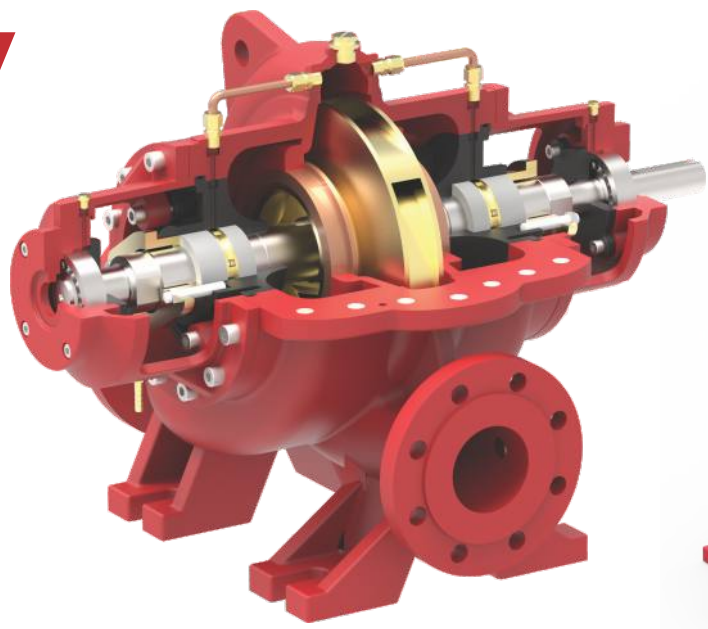


FLHC & FLBS SERIES

FIRE PUMPS 50 Hz





When it comes to the science of pumping, Lubi pumps present smart, sturdy and sustainable pumping solutions with over 50 years of unmatched experience and expertise for applications in the Centrifugal Pump industry.

We have nine state of the art modern, high technology, manufacturing facilities in India comprising of more than 350,000 square meter of floor area to manufacture the entire range of products offered by Lubi.

All the manufacturing facilities are ISO-9001-2008 certified for Quality Systems and ISO 14001- 2004 certified for Environment Management Systems by TUV, Germany.

We are a vertically integrated manufacturing company where starting from Design and Engineering of products to manufacturing of components, assembly, testing and final finishing and packaging is done within our various manufacturing facilities. This helps us in providing our customers with Top Quality, Competitively Priced Products delivered on time.

We have a wide range of Fire Pumps and Controllers covering a range from 50 to 3000 USGPM and pressure from 66 psi to 336 psi. Our range of UL Listed and /or FM Approved Fire Pumps includes the Horizontal Split Case and End Suction Pumps. These can be provided with Diesel Engine or Electric Motors as per customer requirements. We also have a full range of Vertical Multistage Jockey Pumps to maintain the pressure in the Fire Systems. We follow the NFPA 20 standard as far as Pump Design and Specifications are concerned.

We export our products worldwide to more than 80 countries. We have a subsidiary company in UAE for distribution of products in Middle East.

Our aim is to provide a Comprehensive Pumping Solution to the customer with Quality Products which are Priced Competitively, delivered On Time and have the Lowest Life Cycle cost, supported by impeccable After Sales Service.

Photographs of a few Manufacturing Units



Contents

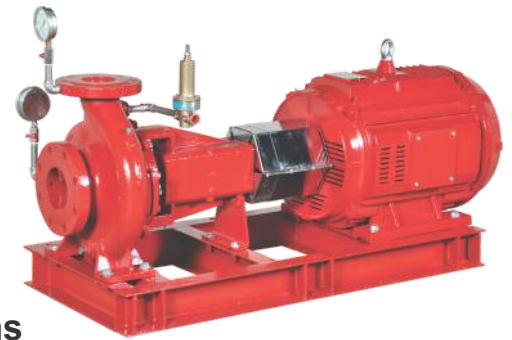
End Suction Fire Pumps	4
Horizontal Split Case Fire Pumps	16



Product data

End Suction Fire Pumps

FLBS



Introduction

Lubi offers FLBS series state-of-the-art fire pumps with diesel Engine or electric motor driven, single-stage End-Suction pump.

These pumps are typically used in fire-fighting applications for supplying water to fire hose reels, fire hydrants or sprinkler systems.

Pumps have a discharge range from 50 to 1000 USgpm and the head range from 3.72 to 9.9 bar.

These fire pumps meet or exceed the requirements of NFPA20.

Installations of these pumps would ensure the safety of human life, buildings, and expensive equipments and plants. FLBS fire pumpset shall be used only where a positive suction is provided as specified in NFPA20.

These fire pumps typically consists of the following equipments:

- Single-Stage End-Suction pump
- Electric motor or Diesel Engine
- Cooling system for Diesel Engine
- Fuel system for Diesel Engine
- Battery for Diesel Engine electric start
- Exhaust system for Diesel Engine
- Diesel Engine / Electric Motor Fire pump controller
- Suction and Discharge pressure gauges
- Casing Relief Valve for Motor Fire pump
- Base frame

All above equipments except fuel supply tank and fire pump controller are mounted on a common base frame.

Lubi can also supply packaged fire pumping system with all required accessories ready for site installation.

Applications

The FLBS fire pumpsets are used in small capacity, diesel Engine or motor driven fire-fighting applications for supplying water to fire hose reels, fire hydrants or sprinkler systems in areas which are prone to the hazards of fire.

The typical applications are as follow:

- Commercial complexes & high rise buildings
- Petrochemical industries and Gas plants
- Airports and ports
- Jetties
- Marine applications
- Power stations and transformer stations
- Chemical industries
- Manufacturing plants
- Fire-work industries
- Warehouses / godowns

Features & benefits

FLBS fire pumpset offers all the features & benefits as mentioned in our LBS standard pump series data booklet. Following are the additional features & benefits offered by these pumpsets:

- State-of-the-art design fire pumping system.
- NFPA-20 design
- Compact diesel Engine driven pump package
- Rugged construction
- More economical than Horizontal Split Case diesel fire pump packages
- Back pull-out design which simplifies inspection and maintenance without disturbing pipe work
- The pump impellers are dynamically balanced to grade 6.3 of ISO 1940-1
- Efficient operation
- Lower initial cost
- Reduced installation time and cost
- Easy access to all working parts
- Ease of maintenance
- Single source unit responsibility.

Type keys - Fire pump

FLBS

Example FLBS 125 - 100 - 250

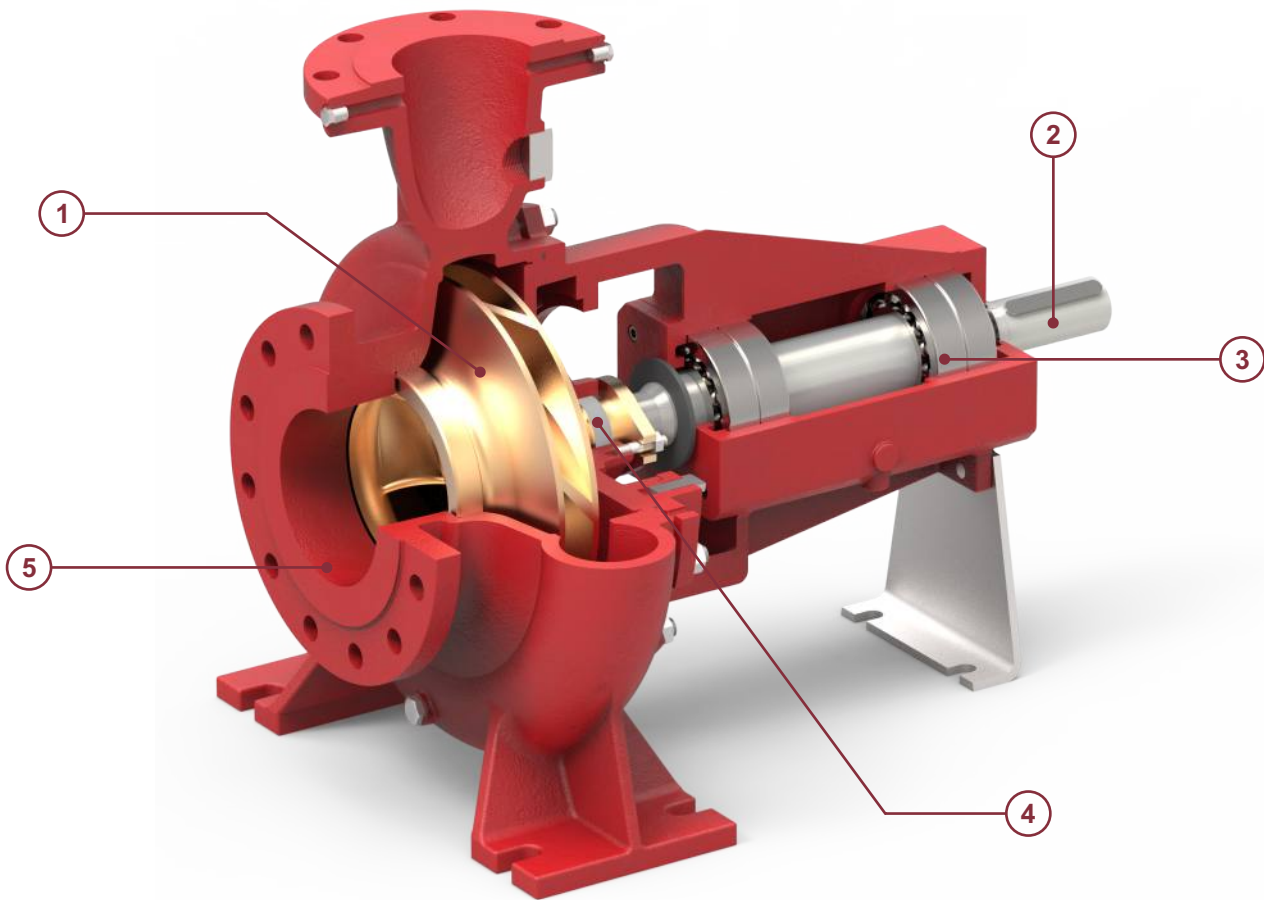
Type range

Suction size (mm)

Delivery size (mm)

Nominal Impeller diameter (mm)

General Pump Features



1 - Impeller & Casing

- Impeller is dynamically balanced to grade G6.3 balance quality in accordance to ISO 1940-1.
- Impeller & Casing are designed using state of art CFD tools to ensure optimal performance.

2 - Shaft

- Heavy duty stainless steel shaft completely sealed and dry for zero corrosion.
- Short and rigid with negligible vibrations.
- Replaceable shaft protecting sleeves.
- No threads exposed to pump medium, long operating life and no corrosion.
- Adjustment-free assembly.

3 - Bearing

- Heavy duty and permanently grease lubricated antifriction bearings for long service life.
- Open gland, enough space for service activities.

4 - Seal

- Asbestos - free, soft packed stuffing boxes.

5 - Casing

- End Suction backpullout design permits maintenance of the pump without removing the pipes.
- Rugged Ball Bearings on Drive as well as Non Drive end.
- Flange drilled as per ANSI B16.1 class 250.
- Smooth surface inside & CED coated for superior corrosion protection.
- Replaceable wear ring protect the casing and the impeller running clearances.
- Heavy duty casing design for high working pressure.

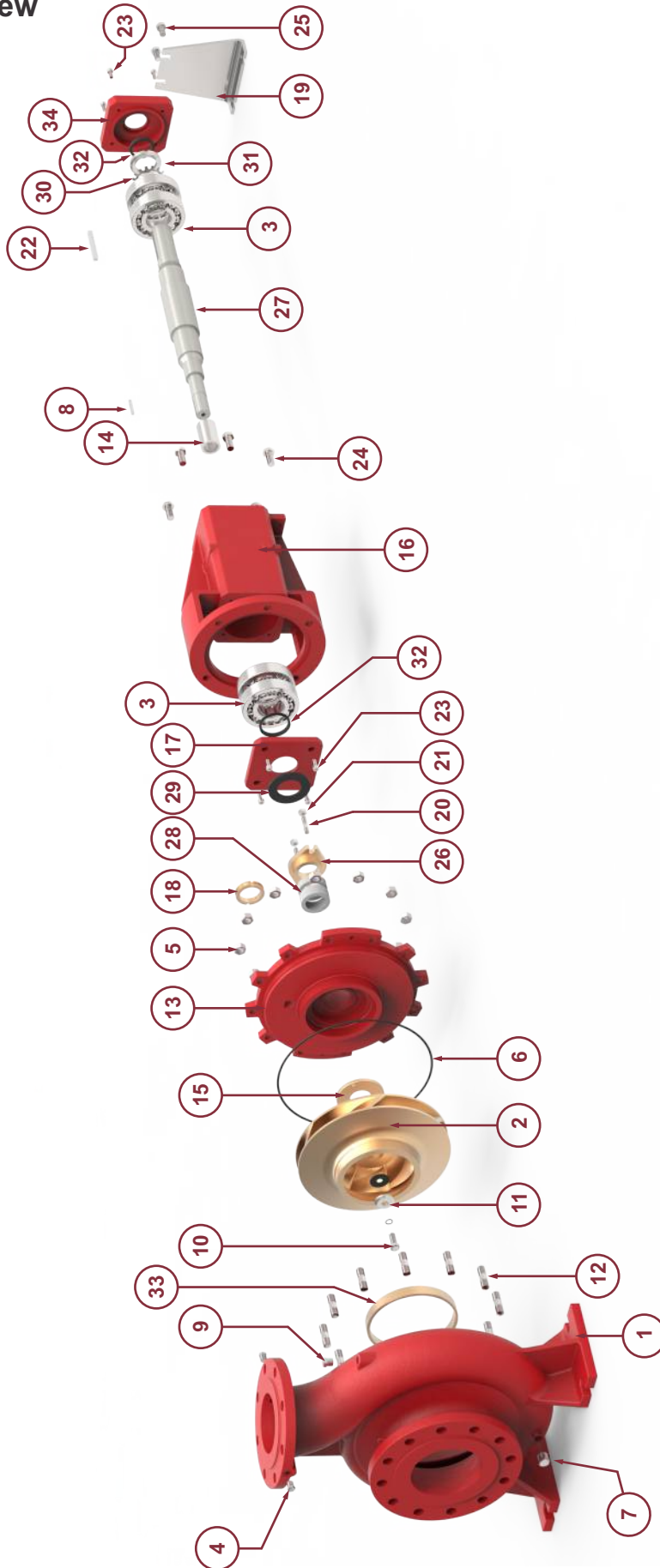


Product data

End Suction Fire Pumps

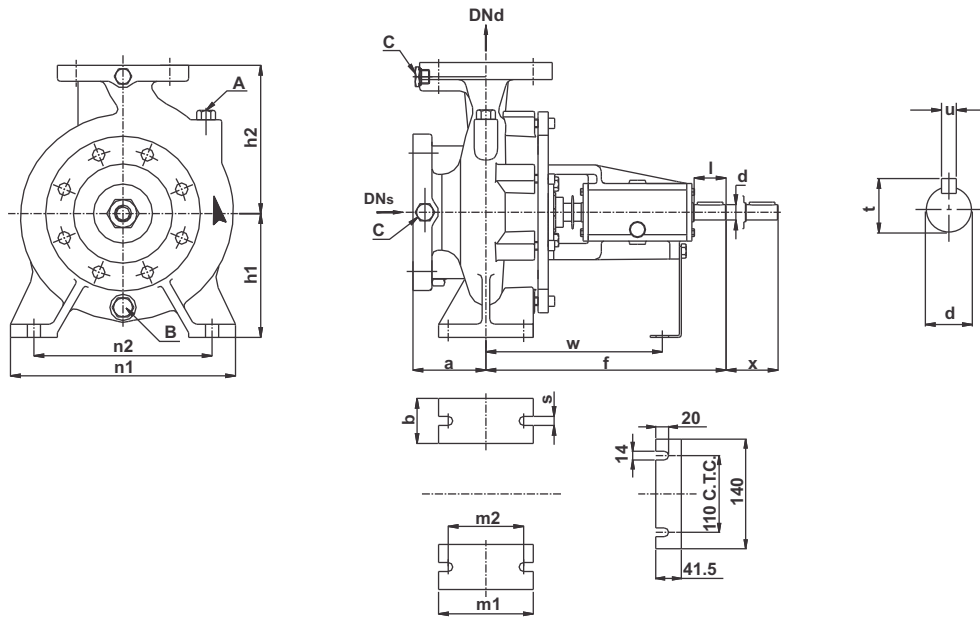
FLBS

Exploded View



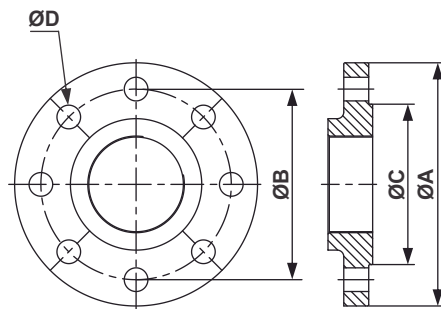
Part no.	Part name	Part no.	Part name	Part no.	Part name	Part no.	Part name
1	Casing	11	Impeller Washer	21	Hex Nut	31	Ring Nut
2	Impeller	12	Stud	22	Key	32	V-seal
3	Ball Bearing	13	Back Cover	23	Cap Screw	33	Wear Ring
4	Plug	14	Shaft Sleeve	24	Hex Bolt	34	Bearing Cover (DE)
5	Hex Nut	15	Gland Cover	25	Hex Bolt		
6	'O' Ring	16	Bearing Bracket	26	Gland		
7	Plug	17	Bearing Cover (NDE)	27	Shaft		
8	Key	18	Lentern Ring	28	Graphite Packing		
9	Plug	19	Foot	29	Water Thrower		
10	Hex Bolt	20	Stud	30	Locking Washer		

Dimensions



Model	DN _s	DN _d	a	b	d.k6	f	h1	h2	l	m1	m2	n1	n2	s	t	u	w	x	A	B	C
FLBS 65-40-250	65	40	100	65	24	360	180	225	50	125	95	320	250	14	27	8	260	100	Ø3/8"	Ø1/2"	Ø1/4"
FLBS 80-65-250	80	65	100	80	42	482	200	250	80	160	120	360	280	18	45	12	340	140	Ø3/8"	Ø1/2"	Ø1/4"
FLBS 125-100-250	125	100	140	80	42	527	225	280	110	160	120	400	315	18	45	12	360	140	Ø3/8"	Ø1/2"	Ø1/4"
FLBS 125-100-315	125	100	140	80	48	630	250	315	110	160	120	400	315	18	51.5	14	445	140	Ø3/8"	Ø1/2"	Ø1/4"
FLBS 150-125-315	150	125	140	100	48	640	280	355	110	200	150	500	400	22	51.5	14	455	140	Ø3/8"	Ø1/2"	Ø1/4"

Flange Dimensions



ANSI 250 Flange Dimensions

Model	Suction				Discharge			
	ØA	ØB	ØC	ØD x Nos. of holes	ØA	ØB	ØC	ØD x Nos. of holes
FLBS 65-40-250	190	149	125	Ø7/8" x 8	155	114	91	Ø7/8" x 4
FLBS 80-65-250	210	168	144	Ø7/8" x 8	190	149	125	Ø7/8" x 8
FLBS 125-100-250	280	235	211	Ø7/8" x 8	255	200	176	Ø7/8" x 8
FLBS 125-100-315	280	235	211	Ø7/8" x 8	255	200	176	Ø7/8" x 8
FLBS 150-125-315	320	270	246	Ø7/8" x 12	280	235	211	Ø7/8" x 8



Product range

End Suction Fire Pumps

FLBS

Approved Fire Pump Models with Rating

RATED CAPACITY- 50 US GPM									
Sr. No.	Pump Model	UL Listed Pressure		FM Approved Pressure		Rated Speed (rpm)	Suction Inlet Dia. (inch)	Discharge Outlet Dia. (inch)	Stage(s)
		(psi)	(bar)	(psi)	(bar)				
1	FLBS 65-40-250	96-130	6.61-8.96	96-130	6.61-8.96	2900	2.5	1.5	1
2	FLBS 80-65-250	85-134	5.86-9.23	85-130	5.86-8.96	2900	3	2.5	1

RATED CAPACITY- 100 US GPM									
Sr. No.	Pump Model	UL Listed Pressure		FM Approved Pressure		Rated Speed (rpm)	Suction Inlet Dia. (inch)	Discharge Outlet Dia. (inch)	Stage(s)
		(psi)	(bar)	(psi)	(bar)				
1	FLBS 65-40-250	95-127	6.55-8.75	96-127	6.61-8.75	2900	2.5	1.5	1
2	FLBS 80-65-250	84-134	5.79-9.23	84-129	5.79-8.89	2900	3	2.5	1

RATED CAPACITY- 150 US GPM									
Sr. No.	Pump Model	UL Listed Pressure		FM Approved Pressure		Rated Speed (rpm)	Suction Inlet Dia. (inch)	Discharge Outlet Dia. (inch)	Stage(s)
		(psi)	(bar)	(psi)	(bar)				
1	FLBS 80-65-250	83-135	5.72-9.30	83-129	5.72-8.89	2900	3	2.5	1

RATED CAPACITY- 200 US GPM									
Sr. No.	Pump Model	UL Listed Pressure		FM Approved Pressure		Rated Speed (rpm)	Suction Inlet Dia. (inch)	Discharge Outlet Dia. (inch)	Stage(s)
		(psi)	(bar)	(psi)	(bar)				
1	FLBS 80-65-250	81-135	5.58-9.90	81-129	5.58-8.89	2900	3	2.5	1

RATED CAPACITY- 250 US GPM									
Sr. No.	Pump Model	UL Listed Pressure		FM Approved Pressure		Rated Speed (rpm)	Suction Inlet Dia. (inch)	Discharge Outlet Dia. (inch)	Stage(s)
		(psi)	(bar)	(psi)	(bar)				
1	FLBS 80-65-250	78-134	5.37-9.23	77-129	5.30-8.89	2900	3	2.5	1

RATED CAPACITY- 300 US GPM									
Sr. No.	Pump Model	UL Listed Pressure		FM Approved Pressure		Rated Speed (rpm)	Suction Inlet Dia. (inch)	Discharge Outlet Dia. (inch)	Stage(s)
		(psi)	(bar)	(psi)	(bar)				
1	FLBS 125-100-250	94-132	6.48-9.10	94-132	6.48-9.10	2900	5	4	1

Product range

End Suction Fire Pumps



Approved Fire Pump Models with Rating

RATED CAPACITY- 400 US GPM									
Sr. No.	Pump Model	UL Listed Pressure		FM Approved Pressure		Rated Speed (rpm)	Suction Inlet Dia. (inch)	Discharge Outlet Dia. (inch)	Stage(s)
		(psi)	(bar)	(psi)	(bar)				
1	FLBS 125-100-250	93-131	6.41-9.03	93-131	6.41-9.03	2900	5	4	1
2	FLBS 125-100-315	122-207	8.41-14.27	118-203	8.13-13.99	2900	5	4	1
3	FLBS 150-125-315	111-192	7.65-13.23	107-195	7.37-13.44	2900	6	5	1

RATED CAPACITY- 450 US GPM									
Sr. No.	Pump Model	UL Listed Pressure		FM Approved Pressure		Rated Speed (rpm)	Suction Inlet Dia. (inch)	Discharge Outlet Dia. (inch)	Stage(s)
		(psi)	(bar)	(psi)	(bar)				
1	FLBS 125-100-250	92-131	6.34-9.03	93-131	6.41-9.03	2900	5	4	1
2	FLBS 125-100-315	121-207	8.34-14.27	117-203	8.13-13.99	2900	5	4	1
3	FLBS 150-125-315	110-192	7.58-13.23	107-195	7.37-13.44	2900	6	5	1

RATED CAPACITY- 500 US GPM									
Sr. No.	Pump Model	UL Listed Pressure		FM Approved Pressure		Rated Speed (rpm)	Suction Inlet Dia. (inch)	Discharge Outlet Dia. (inch)	Stage(s)
		(psi)	(bar)	(psi)	(bar)				
1	FLBS 125-100-250	91-130	6.27-8.96	91-130	6.27-8.96	2900	5	4	1
2	FLBS 125-100-315	120-207	8.27-14.27	116-203	7.99-13.99	2900	5	4	1
3	FLBS 150-125-315	110-192	7.58-13.23	106-194	7.30-13.37	2900	6	5	1

RATED CAPACITY- 750 US GPM									
Sr. No.	Pump Model	UL Listed Pressure		FM Approved Pressure		Rated Speed (rpm)	Suction Inlet Dia. (inch)	Discharge Outlet Dia. (inch)	Stage(s)
		(psi)	(bar)	(psi)	(bar)				
1	FLBS 125-100-250	86-125	5.92-8.61	85-125	5.86-8.61	2900	5	4	1
2	FLBS 125-100-315	111-203	7.65-13.99	108-199	7.44-13.72	2900	5	4	1
3	FLBS 150-125-315	109-190	7.51-13.1	104-194	7.17-13.37	2900	6	5	1



Product range

End Suction Fire Pumps

FLBS

Approved Fire Pump Models with Rating

RATED CAPACITY- 1000 US GPM									
Sr. No.	Pump Model	UL Listed Pressure		FM Approved Pressure		Rated Speed (rpm)	Suction Inlet Dia. (inch)	Discharge Outlet Dia. (inch)	Stage(s)
		(psi)	(bar)	(psi)	(bar)				
1	FLBS 150-125-315	104-188	7.17-12.96	99-190	6.82-13.1	2900	6	5	1

Product range

End Suction Fire Pumps

FLBS

End Suction Quick Selection guide

Rated Capacity in GPM / (LPM)	Pressure in PSI(Bar)	Electric & Diesel Engine Pump Model	Rated Pressure in Bar	Jockey Flow in USgpm	Jockey Pump Model	Electric Motor HP @ 2900 RPM	Diesel Engine HP @ 3000 RPM	Jockey Pump HP @ 2900 RPM
50(189)	96-130 (6.61- 8.96)	FLBS 65-40-250	6.7	2.50	LCR 1s-15	15HP	15 HP	0.75 HP
			7	2.50	LCR 1s-15	15HP	15 HP	0.75 HP
			8	2.50	LCR 1s-17	15HP	15 HP	0.75 HP
			8.95	2.50	LCR 1s-19	15HP	20 HP	0.75 HP
	85-134 (5.86- 9.23)	FLBS 80-65-250	6	2.50	LCR 1s-13	15HP	15 HP	0.5 HP
			9.2	2.50	LCR 1s-19	20HP	30 HP	0.75 HP
100(378)	95-127 (6.55- 8.75)	FLBS 65-40-250	6.6	5.00	LCR 1-12	15HP	15 HP	1 HP
			7	5.00	LCR 1-13	15HP	20 HP	1 HP
			8	5.00	LCR 1-15	20 HP	20 HP	1 HP
			8.75	5.00	LCR 1-17	20 HP	30 HP	1.5 HP
	84-134 (5.79- 9.23)	FLBS 80-65-250	6	5.00	LCR 1-11	15HP	15 HP	0.75 HP
			9.2	5.00	LCR 1-17	25 HP	30 HP	1.5 HP
150(567)	83-135 (5.12- 9.30)	FLBS 80-65-250	6	7.50	LCR 1-13	15HP	20 HP	1 HP
			7	7.50	LCR 1-15	20 HP	30 HP	1 HP
			8	7.50	LCR 2-11	25 HP	30 HP	1.5 HP
			9	7.50	LCR 2-13	30HP	30 HP	2 HP
			9.3	7.50	LCR 2-13	30HP	45 HP	2 HP



Product range

End Suction Fire Pumps

FLBS

End Suction Quick Selection guide

Rated Capacity in GPM / (LPM)	Pressure in PSI(Bar)	Electric & Diesel Engine Pump Model	Rated Pressure in Bar	Jockey Flow in USgpm	Jockey Pump Model	Electric Motor HP @ 2900 RPM	Diesel Engine HP @ 3000 RPM	Jockey Pump HP @ 2900 RPM
200 (757)	81-135 (5.58-9.30)	FLBS 80-65-250	5.8	10.00	LCR 3-11	20 HP	20 HP	1.5 HP
			6	10.00	LCR 3-11	20 HP	30 HP	1.5 HP
			7	10.00	LCR 3-13	25 HP	30 HP	1.5 HP
			8	10.00	LCR 3-15	30 HP	30 HP	1.5 HP
			9	10.00	LCR 3-17	30 HP	45 HP	2 HP
			9.3	10.00	LCR 3-17	40 HP	45 HP	2 HP
250(946)	78-134 (5.37-9.23)	FLBS 80-65-250	5.5	12.50	LCR 3-12	20 HP	30 HP	1.5 HP
			6	12.50	LCR 3-13	25 HP	30 HP	1.5 HP
			7	12.50	LCR 3-15	30 HP	30 HP	1.5 HP
			8	12.50	LCR 3-17	30 HP	45 HP	2 HP
			9	12.50	LCR 3-19	40 HP	45 HP	2 HP
300(1135)	94-132 (6.48-9.10)	FLBS 125-100-250	6.65	15.00	LCR 3-17	40 HP	60 HP	2 HP
			7	15.00	LCR 3-17	50 HP	60 HP	2 HP
			8	15.00	LCR 4-10	50 HP	60 HP	3 HP
			9	15.00	LCR 4-12	60 HP	71 HP	3 HP

Product range

End Suction Fire Pumps

FLBS

End Suction Quick Selection guide

Rated Capacity in GPM / (LPM)	Pressure in PSI(Bar)	Electric & Diesel Engine Pump Model	Rated Pressure in Bar	Jockey Flow in USgpm	Jockey Pump Model	Electric Motor HP @ 2900 RPM	Diesel Engine HP @ 3000 RPM	Jockey Pump HP @ 2900 RPM
400(1514)	93-131 (6.41 - 9.03)	FLBS 125-100-250	6.55	20.00	LCR 4-10	50 HP	60 HP	3 HP
			7	20.00	LCR 4-10	50 HP	60 HP	3 HP
			8	20.00	LCR 4-12	60 HP	71 HP	3 HP
			9	20.00	LCR 4-12	75 HP	71 HP	3 HP
	122-207 (8.41 - 14.27)	FLBS 125-100-315	10	20.00	LCR 4-14	75 HP	83 HP	4 HP
			11	20.00	LCR 4-16	100 HP	115 HP	4 HP
			12	20.00	LCR 4-16	100 HP	115 HP	4 HP
			13	20.00	LCR 4-19	100 HP	115 HP	5.5 HP
			14	20.00	LCR 4-19	100 HP	115 HP	5.5 HP
	450(1703)	92-131 (6.34 - 9.03)	FLBS 125-100-250	6.5	22.50	LCR 4-10	50 HP	60 HP
7				22.50	LCR 4-10	50 HP	60 HP	3 HP
8				22.50	LCR 4-12	60 HP	71 HP	3 HP
9				22.50	LCR 4-14	75 HP	83 HP	4 HP
121-207 (8.34 - 14.27)		FLBS 125-100-315	10	22.50	LCR 4-14	75 HP	83 HP	4 HP
			11	22.50	LCR 4-16	100 HP	115 HP	4 HP
			12	22.50	LCR 4-19	100 HP	115 HP	5.5 HP
			13	22.50	LCR 4-19	100 HP	115 HP	5.5 HP
			14	22.50	LCR 4-22	125 HP	145 HP	5.5 HP



Product range

End Suction Fire Pumps

FLBS

End Suction Quick Selection guide

Rated Capacity in GPM / (LPM)	Pressure in PSI(Bar)	Electric & Diesel Engine Pump Model	Rated Pressure in Bar	Jockey Flow in USgpm	Jockey Pump Model	Electric Motor HP @ 2900 RPM	Diesel Engine HP @ 3000 RPM	Jockey Pump HP @ 2900 RPM
500(1892)	91-130 (6.27 - 8.96)	FLBS 125-100-250	6.5	25.00	LCR 4-10	50 HP	60 HP	3 HP
			7	25.00	LCR 4-12	60 HP	60 HP	3 HP
			8	25.00	LCR 4-14	60 HP	71 HP	4 HP
			8.96	25.00	LCR 4-14	75 HP	83 HP	4 HP
	120-207 (8.27 - 14.27)	FLBS 125-100-315	10	22.00	LCR 10-10	100 HP	115 HP	5.5 HP
			11	25.00	LCR 10-12	100 HP	115 HP	5.5 HP
			12	25.00	LCR 10-14	100 HP	115 HP	7.5 HP
			13	25.00	LCR 10-14	125 HP	145 HP	7.5 HP
			14	22.00	LCR 10-14	125 HP	145 HP	7.5 HP
750(2838)	86-125 (5.92 - 8.61)	FLBS 125-100-250	6	37.50	LCR 10-7	60 HP	71 HP	4 HP
			7	37.50	LCR 10-8	75 HP	83 HP	4 HP
			8	37.50	LCR 10-10	100 HP	115 HP	5.5 HP
			8.6	37.50	LCR 10-10	100 HP	115 HP	5.5 HP
	111-203 (7.65 - 13.99)	FLBS 125-100-315	9	37.50	LCR 10-12	100 HP	115 HP	5.5 HP
			10	37.50	LCR 10-12	100 HP	115 HP	5.5 HP
			11	37.50	LCR 10-14	125 HP	145 HP	7.5 HP
			12	37.50	LCR 10-14	125 HP	145 HP	7.5 HP
			13	37.50	LCR 10-16	150 HP	175 HP	7.5 HP
			13.99	37.50	LCR 10-16	150 HP	175 HP	7.5 HP

Product range

End Suction Fire Pumps

FLBS

End Suction Quick Selection guide

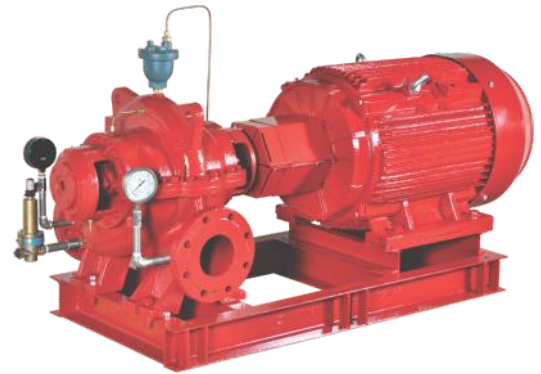
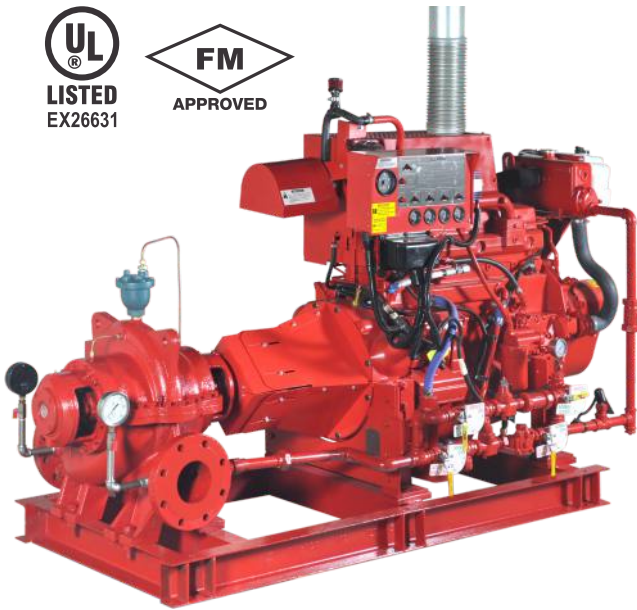
Rated Capacity in GPM / (LPM)	Pressure in PSI(Bar)	Electric & Diesel Engine Pump Model	Rated Pressure in Bar	Jockey Flow in USgpm	Jockey Pump Model	Electric Motor HP @ 2900 RPM	Diesel Engine HP @ 3000 RPM	Jockey Pump HP @ 2900 RPM
1000(3785)	104-198 (7.71 - 12.96)	FLBS 150-125-315	7.3	50.00	LCR 15-6	100 HP	115 HP	7.5 HP
			8	50.00	LCR 15-7	125 HP	145 HP	7.5 HP
			9	50.00	LCR 15-8	125 HP	145 HP	10 HP
			10	50.00	LCR 15-8	150 HP	175 HP	10 HP
			11	50.00	LCR 15-9	200 HP	216 HP	10 HP
			12	50.00	LCR 15-10	200 HP	216 HP	15 HP
			12.96	50.00	LCR 15-12	200HP	216 HP	15 HP



Product data

Horizontal split case fire pumps

FLHC



Introduction

Lubi offers FLHC series state-of-the-art fire pumps with diesel Engine/electric motor driven, horizontal split case pump.

These pumps are typically used in fire-fighting applications for supplying water to fire hose reels, fire hydrants or sprinkler systems.

Pumps have a discharge range from 450 to 3000 USgpm and the head range from 61 to 336 psi.

These fire pumps meet or exceed the requirements of NFPA20.

Installations of these pumps would ensure the safety of human life, buildings, expensive plants and equipments. FLHC fire pumpset shall be used only where a positive suction is provided as specified in NFPA20.

The fire pumps typically consists of the following equipments:

- Pump
- Electric motor/Diesel Engine assembled with
 - cooling system (for Diesel Engine only)
 - fuel system (for Diesel Engine only)
 - battery system (for Diesel Engine only)
 - exhaust system (for Diesel Engine only)
- Fire pump controller
- Suction and discharge gauges
- Air relief valve
- Common base plate

Note: For your jockey pump requirements kindly refer our literature for LCR and/or LES pumps.

All above equipments except fuel supply tank and fire pump controller are mounted on a common base frame.

Lubi can also supply Packaged fire pumping system with all required accessories ready for site installation.

Applications

The FLHC fire pumps are used in fire-fighting applications for supplying water to fire hose reels, fire hydrants or sprinkler systems in areas which are prone to the hazards of fire.

The typical applications are as follow:

- Commercial complexes and high rise buildings
- Petrochemical industries and Gas plants
- Oil and Gas on-shore & off-shore platforms
- Oil terminals
- Airports and ports
- Jetties
- Marine applications
- Power stations and transformer stations
- Chemical industries
- Manufacturing plants
- Fire-work industries
- Warehouses/godowns.

Features & benefits

FLHC fire pumps offers all features & benefits as mentioned in our LHC standard pump series data booklet. Following are the additional features & benefits offered by these pumps:

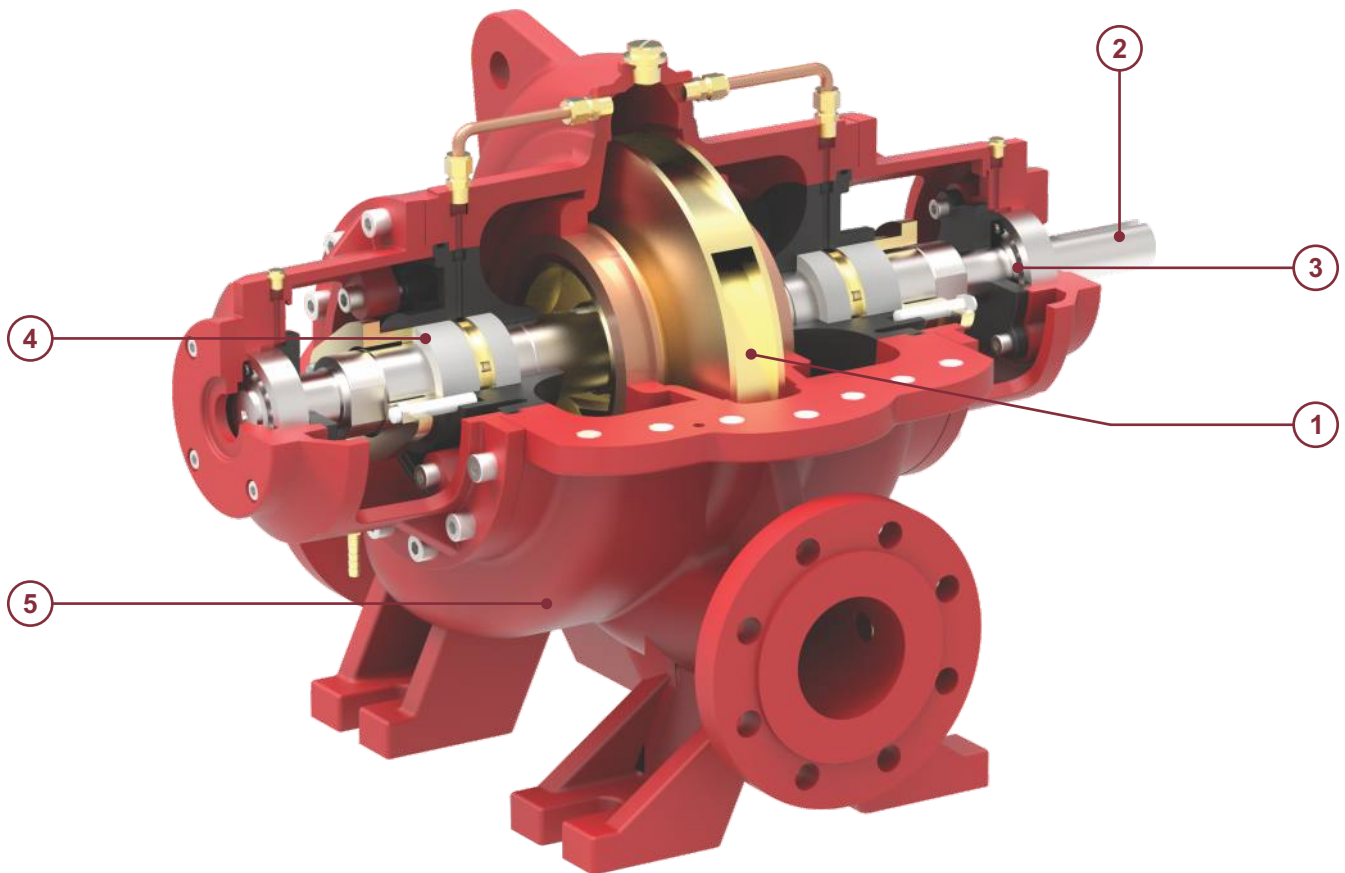
- State-of-the-art design fire pumping system.
- UL listed/FM approved/NFPA-20 design
- Diesel Engine as well as electric motor driven pump
- Rugged construction
- Liberal water passages
- Automatic air relief valve
- Efficient operation
- Lower initial cost
- Reduced installation time and cost
- Simplified piping design
- Suitable for space saving installation systems and retrofit applications
- Easy access to all working parts
- Ease of maintenance
- Single source unit responsibility.

Type keys - Fire pump

FLHC

Example	FLHC	125 - 100 - 250
Type range		
Suction size (mm)		
Delivery size (mm)		
Nominal Impeller diameter (mm)		

General Pump Features



1 - Impeller & Casing

- Minimal axial thrust due to double-entry impeller.
- Impeller is dynamically balanced to G6.3 balance quality Grade in accordance to ISO 1940-1.
- Impeller & Casing are designed using state of the art CFD tools to ensure optimal performance.

2 - Shaft

- Heavy duty shaft completely sealed and dry of zero corrosion.
- Short and rigid with negligible vibrations.
- Replaceable shaft protecting sleeves.
- No threads exposed to pump medium, long operating life and no corrosion.
- Adjustment-free assembly.

3 - Bearing

- Heavy duty and grease lubricated antifriction Bearings for long service life.
- Open gland, enough space for service activities.

4 - Seal

- Asbestos - free, potable water quality soft packed stuffing boxes.

5 - Casing

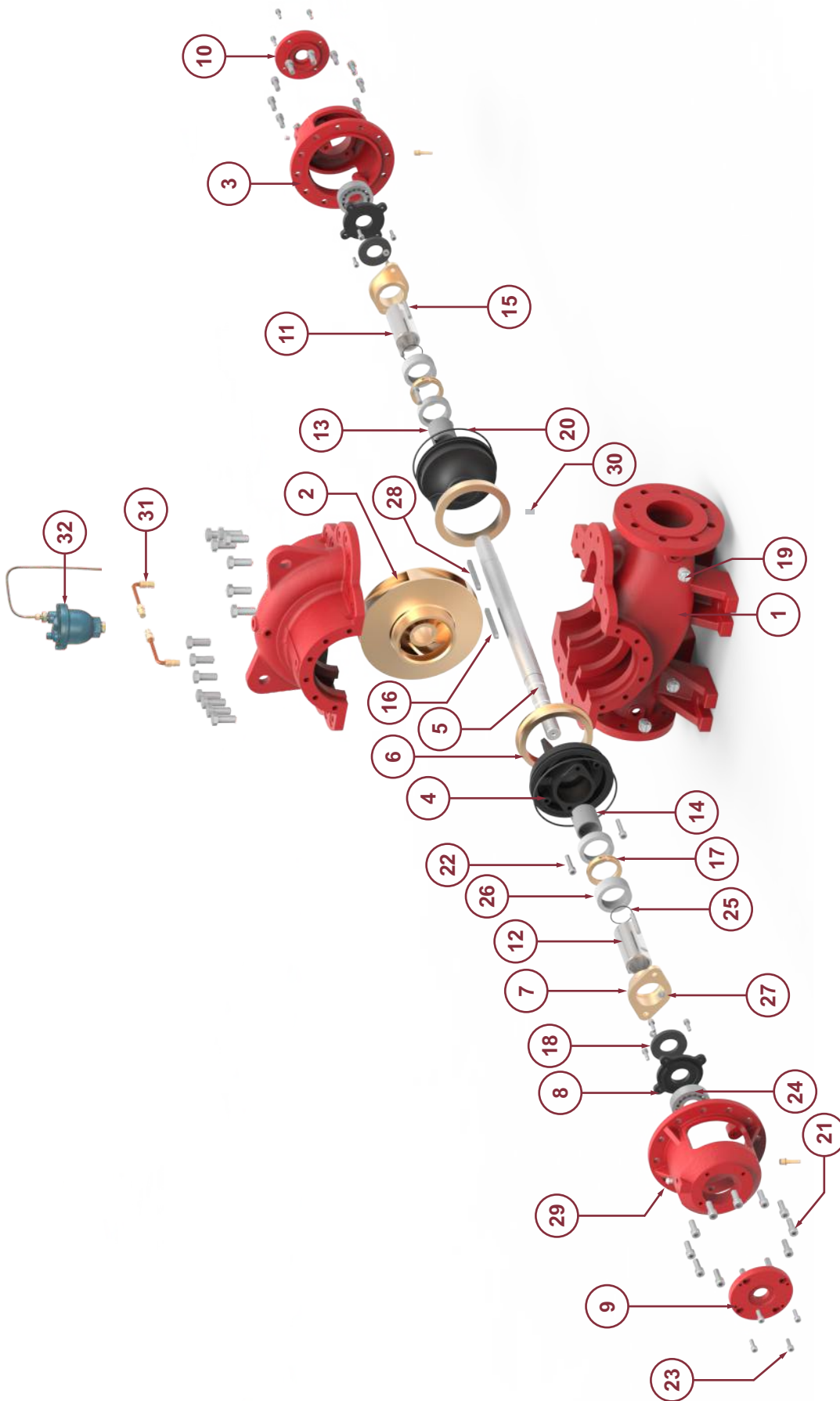
- In-line axially split design which permits removal of the complete rotor without removing the pipe & motor.
- Short distance between bearings.
- Leak-tight due to compact joint flange with long Pre-stressed bolts.
- Counter-rotation possible with similar parts.
- Easy mounting self-aligning upper casing.
- Flange drilled as per ANSI B16.1 class 250.
- Smooth surface inside CED coated for superior corrosion protection.
- Replaceable wear ring protect the casing and the impeller running clearances.
- Heavy duty casing design for high working pressure.

Product data

Horizontal split case fire pumps

FLHC

Exploded View



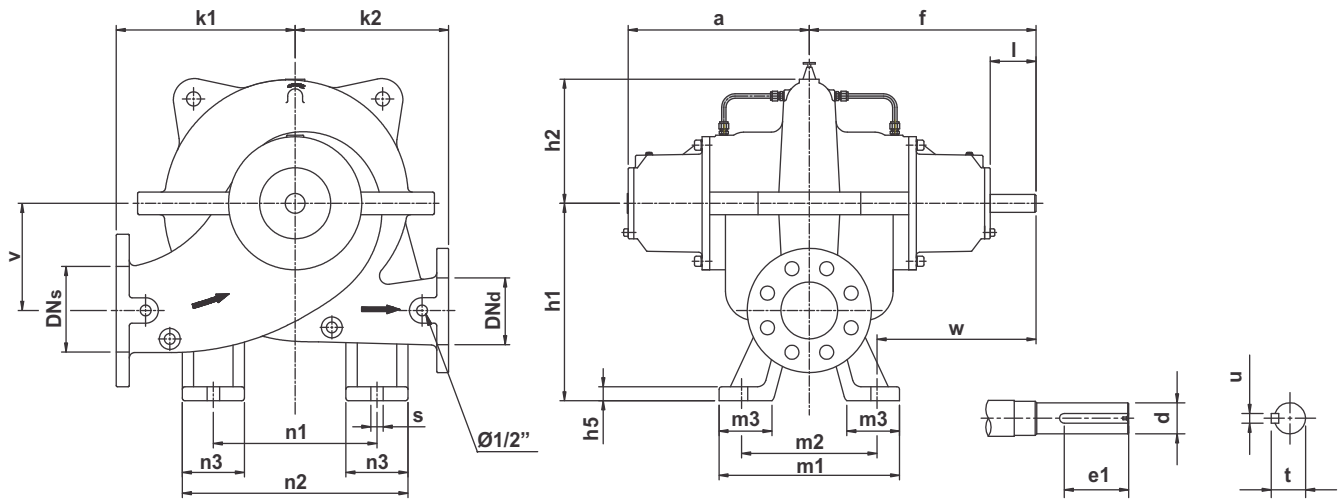
Part no.	Part name	Part no.	Part name	Part no.	Part name	Part no.	Part name
1	Split casing	11	R.H. Sleeve	21	Cap screw with spring washer	31	Hose pipe
2	Impeller	12	L.H. Sleeve	22	Cap screw	32	Automatic Air Release Valve
3	Bearing housing	13	Shaft sleeve	23	Cap screw		
4	Back cover	14	Shaft sleeve	24	Ball bearing		
5	Shaft	15	Stud	25	'O' ring		
6	Wear ring	16	Key	26	Graphite packing		
7	Gland	17	Lantern ring	27	Hex nut		
8	Internal bearing cover	18	Water thrower	28	Key		
9	External bearing cover	19	Drain plug	29	Grease nipple		
10	External bearing cover(drive)	20	'O' ring	30	Dowel pin		

Product data

Horizontal split case fire pumps

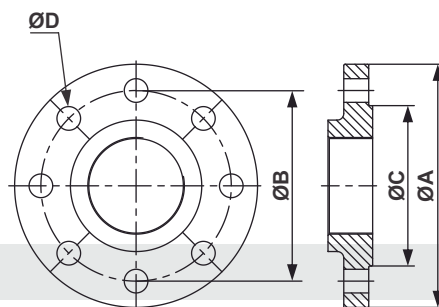
FLHC

Dimensions



Model	DN _s	DN _d	k1	k2	v	n1	n2	n3	a	f	h1	h2	h5	s	w	m1	m2	m3	d	l	e1	u	t
FLHC 125-100-250	125	100	310	250	170	250	350	100	323	402	320	199	25	22	282	320	240	95	32	81	65	10	35,3
FLHC 125-100-400	125	100	375	325	210	370	490	120	334	434	365	260	25	22	314	320	240	87	38	102	85	10	41
FLHC 150-125-315	150	125	350	300	195	300	440	140	333	434	375	244	25	22	309	350	250	99	38	102	85	10	41
FLHC 200-150-250	200	150	385	325	190	350	490	140	354	451	390	233	25	24	298	370	305	80	38	97	85	10	41
FLHC 250-200-250	250	200	450	325	280	360	495	135	402	499	525	281	28	24	299	500	400	96	38	97	85	10	41
FLHC 250-200-315	250	200	450	375	235	430	570	140	408	513	465	287	28	24	333	460	360	105	48	105.5	93	14	52
FLHC 250-200-400	250	200	485	420	230	460	604	144	409	515	465	313	28	24	365	400	300	97	55	106	94	16	59
FLHC 250-200-650	250	200	600	600	325	650	810	160	434	570	575	405	32	24	382	453	375	119	75	135	135	20	79.5
FLHC 300-250-500	300	250	600	575	275	650	835	185	495	634	550	379	30	28	424	520	420	120	85	140	130	22	89
FLHC 300-250-650	300	250	700	700	320	860	1020	160	458	597	590	415	32	24	417	460	360	120	85	140	135	22	89

Flange Dimensions



ANSI 250 Flange Dimensions

Model	Suction				Discharge			
	ØA	ØB	ØC	ØD x Nos. of holes	ØA	ØB	ØC	ØD x Nos. of holes
FLHC 125-100-250	280	235	211	Ø7/8" x 8	255	200	176	Ø7/8" x 8
FLHC 125-100-400	280	235	211	Ø7/8" x 8	255	200	176	Ø7/8" x 8
FLHC 150-125-315	320	270	246	Ø7/8" x 12	280	235	211	Ø7/8" x 8
FLHC 200-150-250	380	330	303	Ø1"X12	320	270	246	Ø7/8"X12
FLHC 250-200-250	445	387	357	Ø1-1/8"X16	380	330	303	Ø1"X12
FLHC 250-200-315	445	387	357	Ø1-1/8"X16	380	330	303	Ø1"X12
FLHC 250-200-400	445	387	357	Ø1-1/8"X16	380	330	303	Ø1"X12
FLHC 250-200-650	445	387	357	Ø1-1/8"X16	380	330	303	Ø1"X12
FLHC 300-250-500	520	451	418	Ø1-1/4"x16	445	387	350	Ø1-1/8"x16
FLHC 300-250-650	520	451	418	Ø1-1/4"x16	445	387	350	Ø1-1/8"x16



Product range

Horizontal split case fire pumps

FLHC

Approved Fire Pump Models with Rating

RATED CAPACITY- 400 US GPM									
Sr. No.	Pump Model	UL Listed Pressure		FM Approved Pressure		Rated Speed (rpm)	Suction Inlet Dia. (inch)	Discharge Outlet Dia. (inch)	Stage(s)
		(psi)	(bar)	(psi)	(bar)				

1	FLHC 125-100-400	245-336	16.8-23.16	-	-	2900	5	4	1
---	-------------------------	---------	------------	---	---	------	---	---	---

RATED CAPACITY- 450 US GPM									
Sr. No.	Pump Model	UL Listed Pressure		FM Approved Pressure		Rated Speed (rpm)	Suction Inlet Dia. (inch)	Discharge Outlet Dia. (inch)	Stage(s)
		(psi)	(bar)	(psi)	(bar)				

1	FLHC 125-100-250	71-131	4.89-9	75-136	5.1-9.3	2900	5	4	1
---	-------------------------	--------	--------	--------	---------	------	---	---	---

2	FLHC 125-100-400	244-335	16.8-23.0	-	-	2900	5	4	1
---	-------------------------	---------	-----------	---	---	------	---	---	---

RATED CAPACITY- 500 US GPM									
Sr. No.	Pump Model	UL Listed Pressure		FM Approved Pressure		Rated Speed (rpm)	Suction Inlet Dia. (inch)	Discharge Outlet Dia. (inch)	Stage(s)
		(psi)	(bar)	(psi)	(bar)				

1	FLHC 125-100-250	71-131	4.89-9	74-135	5.10-9.3	2900	5	4	1
---	-------------------------	--------	--------	--------	----------	------	---	---	---

2	FLHC 125-100-400	243-334	16.75-23.0	-	-	2900	5	4	1
---	-------------------------	---------	------------	---	---	------	---	---	---

3	FLHC 150-125-315	131-214	9-14.75	131-214	9-14.75	2900	6	5	1
---	-------------------------	---------	---------	---------	---------	------	---	---	---

RATED CAPACITY- 750 US GPM									
Sr. No.	Pump Model	UL Listed Pressure		FM Approved Pressure		Rated Speed (rpm)	Suction Inlet Dia. (inch)	Discharge Outlet Dia. (inch)	Stage(s)
		(psi)	(bar)	(psi)	(bar)				

1	FLHC 125-100-250	65-130	4.4-8.96	66-132	4.5-9.10	2900	5	4	1
---	-------------------------	--------	----------	--------	----------	------	---	---	---

2	FLHC 125-100-400	236-323	16.27+22.27	-	-	2900	5	4	1
---	-------------------------	---------	-------------	---	---	------	---	---	---

3	FLHC 150-125-315	129-213	8.8-14.68	129-212	8.8-14.61	2900	6	5	1
---	-------------------------	---------	-----------	---------	-----------	------	---	---	---

RATED CAPACITY- 1000 US GPM									
Sr. No.	Pump Model	UL Listed Pressure		FM Approved Pressure		Rated Speed (rpm)	Suction Inlet Dia. (inch)	Discharge Outlet Dia. (inch)	Stage(s)
		(psi)	(bar)	(psi)	(bar)				

1	FLHC 200-150-250	80-142	5.51-9.79	79-141	5.44-9.72	2900	8	6	1
---	-------------------------	--------	-----------	--------	-----------	------	---	---	---

2	FLHC 150-125-315	127-210	8.75-14.4	126-209	8.68-14.4	2900	6	5	1
---	-------------------------	---------	-----------	---------	-----------	------	---	---	---

RATED CAPACITY- 1250 US GPM									
Sr. No.	Pump Model	UL Listed Pressure		FM Approved Pressure		Rated Speed (rpm)	Suction Inlet Dia. (inch)	Discharge Outlet Dia. (inch)	Stage(s)
		(psi)	(bar)	(psi)	(bar)				

1	FLHC 200-150-250	78-140	5.37-9.65	77-140	5.30-9.65	2900	8	6	1
---	-------------------------	--------	-----------	--------	-----------	------	---	---	---

2	FLHC 150-125-315	121-205	8.34-14.13	119-204	8.20-14	2900	6	5	1
---	-------------------------	---------	------------	---------	---------	------	---	---	---

Product range

Horizontal split case fire pumps

FLHC



Approved Fire Pump Models with Rating

RATED CAPACITY- 1500 US GPM									
Sr. No.	Pump Model	UL Listed Pressure		FM Approved Pressure		Rated Speed (rpm)	Suction Inlet Dia. (inch)	Discharge Outlet Dia. (inch)	Stage(s)
		(psi)	(bar)	(psi)	(bar)				
1	FLHC 200-150-250	75-139	5.17-9.58	73-137	5.03-9.44	2900	8	6	1
2	FLHC 250-200-315	113-210	7.7-14.4	-	-	2900	10	8	1
3	FLHC 250-200-400	135-206	9.30-14.2	135-203	9.30-13.99	2350	10	8	1
4	FLHC 250-200-650	184-245	12.6-16.8	-	-	1470	10	8	1

RATED CAPACITY- 2000 US GPM									
Sr. No.	Pump Model	UL Listed Pressure		FM Approved Pressure		Rated Speed (rpm)	Suction Inlet Dia. (inch)	Discharge Outlet Dia. (inch)	Stage(s)
		(psi)	(bar)	(psi)	(bar)				
1	FLHC 250-200-250	80-133	5.51-9.17	79-131	5.44-9.03	2900	10	8	1
2	FLHC 250-200-315	109-209	7.5-14.41	-	-	2900	10	8	1
3	FLHC 250-200-315	72-133	4.96-9.17	70-131	4.82-9.03	2350	10	8	1
4	FLHC 250-200-400	132-204	9.10-14.06	131-202	9.03-13.92	2350	10	8	1
5	FLHC 250-200-650	180-242	12.4-16.6	-	-	1470	10	8	1

RATED CAPACITY- 2500 US GPM									
Sr. No.	Pump Model	UL Listed Pressure		FM Approved Pressure		Rated Speed (rpm)	Suction Inlet Dia. (inch)	Discharge Outlet Dia. (inch)	Stage(s)
		(psi)	(bar)	(psi)	(bar)				
1	FLHC 250-200-400	126-200	8.68-13.78	126-199	8.68-13.72	2350	10	8	1
2	FLHC 300-250-500	93-152	6.4-10.4	-	-	1470	12	10	1
3	FLHC 300-250-650	152-224	10.4-15.4	-	-	1470	12	10	1

RATED CAPACITY- 3000 US GPM									
Sr. No.	Pump Model	UL Listed Pressure		FM Approved Pressure		Rated Speed (rpm)	Suction Inlet Dia. (inch)	Discharge Outlet Dia. (inch)	Stage(s)
		(psi)	(bar)	(psi)	(bar)				
1	FLHC 300-250-500	90-151	6.20-10.4	-	-	1470	12	10	1



Product range

Horizontal split case fire pumps

FLHC

Horizontal Split Case Quick Selection guide

Rated Capacity in GPM / (LPM)	Pressure in PSI(Bar)	Electric & Diesel Engine Pump Model	Rated Pressure in Bar	Jockey Flow in USgpm	Jockey Pump Model	Electric Motor HP	Diesel Engine HP	Jockey Pump HP @ 2900 RPM
400(1514)	245-336 (16.89-23.16)	FLHC 125-100-400 2900/3000 RPM	17	20	LCR10-18	200HP	191HP	10HP
			18	20	LCR10-18	200HP	191HP	10HP
			19	20	LCR 10-20	200HP	217HP	10HP
			20	20	LCR 10-20	200HP	217HP	10HP
			21	20	LCR 10-22	200HP	249HP	10HP
			22	20	LCR 10-22	250HP	249HP	10HP
			23	22.5	LCR15-17	250HP	275HP	20HP
450 (1703)	71-131 (4.89-9)	FLHC 125-100-250 2900/3000 RPM	5	22.5	LCR 4-8	40 HP	45HP	2HP
			6	22.5	LCR 4-10	50 HP	60HP	3HP
			7	22.5	LCR 4-10	60 HP	60HP	3HP
			8	22.5	LCR 4-12	60 HP	71HP	3HP
			9	22.5	LCR 4-14	75 HP	83HP	4HP
450 (1703)	244-335 (16.82-23.09)	FLHC 125-100-400 2900/3000 RPM	17	22.5	LCR 10-18	200HP	191HP	10HP
			18	22.5	LCR 10-20	200HP	217HP	10HP
			19	22.5	LCR 10-20	200HP	217HP	10HP
			20	22.5	LCR 10-22	200HP	249HP	10HP
			21	22.5	LCR 10-22	250HP	249HP	10HP
			22	22	LCR 10-22	250HP	275HP	10HP
			23	22.5	LCR15-17	250HP	275HP	20HP
500 (1892)	71-131 (4.89-9)	FLHC 125-100-250 2900/3000 RPM	5	25	LCR 4-8	40 HP	45HP	2HP
			6	25	LCR 4-10	50 HP	60HP	3HP
			7	25	LCR 4-12	60 HP	71HP	3HP
			8	25	LCR 4-14	75 HP	83HP	4HP
			9	25	LCR 4-14	75 HP	83HP	4HP
500 (1892)	131-214 (9-14.75)	FLHC 150-125-315 2900/3000 RPM	9	25	LCR 4-14	100 HP	115HP	4HP
			10	22.3	LCR 10-10	125 HP	145HP	5.5HP
			11	25	LCR 10-12	125 HP	145HP	5.5HP
			12	25	LCR 10-14	150 HP	175HP	7.5HP
			13	25	LCR 10-14	150 HP	175HP	7.5HP
			14	22.3	LCR 10-14	200 HP	216HP	7.5HP
			14.75	25	LCR 10-16	200 HP	216HP	7.5HP

Product range

Horizontal split case fire pumps

FLHC

Horizontal Split Case Quick Selection guide

Rated Capacity in GPM / (LPM)	Pressure in PSI(Bar)	Electric & Diesel Engine Pump Model	Rated Pressure in Bar	Jockey Flow in USgpm	Jockey Pump Model	Electric Motor HP	Diesel Engine HP	Jockey Pump HP @ 2900 RPM
500 (1893)	243-334 (16.75-23.02)	FLHC 125-100-400 2900/3000 RPM	17	25	LCR10-18	200HP	217HP	10HP
			18	25	LCR 10-20	200HP	217HP	10HP
			19	25	LCR 10-20	200HP	249HP	10HP
			20	25	LCR 10-22	250HP	249HP	10HP
			21	25	LCR 10-22	250HP	249HP	10HP
			22	25	LCR15-17	250HP	275HP	20HP
			23	23.5	LCR15-17	250HP	275HP	20HP
750(2838)	65-130 (4.4-8.96)	FLHC 125-100-250 2900/3000 RPM	5	37.5	LCR 10-6	50 HP	60HP	3HP
			6	37.5	LCR 10-7	60 HP	71HP	4HP
			7	37.5	LCR 10-8	75 HP	83HP	4HP
			8	37.5	LCR 10-10	100 HP	115HP	5.5HP
			8.96	37.5	LCR 10-12	100 HP	115HP	5.5HP
750(2838)	129-213 (8.8-14.68)	FLHC 150-125-315 2900/3000 RPM	9	37.5	LCR 10-12	125 HP	145HP	5.5HP
			10	37.5	LCR 10-12	125 HP	145HP	5.5HP
			11	37.5	LCR 10-14	150 HP	175HP	7.5HP
			12	37.5	LCR 10-14	200 HP	216HP	7.5HP
			13	37.5	LCR 10-16	200 HP	216HP	7.5HP
			14	37.5	LCR 10-16	200 HP	216HP	7.5HP
			14.68	37.5	LCR 10-18	200 HP	275HP	10 HP
750 (2839)	236-323 (16.27-22.27)	FLHC 125-100-400 2900/3000 RPM	16.5	37.5	LCR 10-20	250HP	249HP	10HP
			17	37.5	LCR 10-20	250HP	249HP	10HP
			18	37.5	LCR10-22	250HP	275HP	10HP
			19	37.5	LCR10-22	250HP	275HP	10HP
			20	37.5	LCR15-17	250HP	300HP	20HP
1000(3785)	80-142 (5.51- 9.7)	FLHC 200-150-250 2900/3000 RPM	6	50	LCR 15-5	100 HP	115HP	5.5 HP
			7	50	LCR 15-6	125 HP	145HP	7.5 HP
			8	50	LCR 15-7	150 HP	175HP	7.5 HP
1000(3785)	127-210 (8.75-14.4)	FLHC 150-125-315 2900/3000 RPM	9	50	LCR 15-8	150 HP	175HP	10 HP
			10	50	LCR 15-8	150 HP	175HP	10 HP
			11	50	LCR 15-9	200 HP	216HP	10 HP
			12	50	LCR 15-10	200 HP	216HP	15 HP
			13	50	LCR 15-12	200 HP	275HP	15 HP
			14	50	LCR 15-12	250 HP	275HP	15 HP



Product range

Horizontal split case fire pumps

FLHC

Horizontal Split Case Quick Selection guide

Rated Capacity in GPM / (LPM)	Pressure in PSI(Bar)	Electric & Diesel Engine Pump Model	Rated Pressure in Bar	Jockey Flow in USgpm	Jockey Pump Model	Electric Motor HP	Diesel Engine HP	Jockey Pump HP @ 2900 RPM
1250(4732)	78-140 (5.3- 9.6)	FLHC 200-150-250 2900/3000 RPM	5.5	60	LCR 15-5	100 HP	115HP	5.5 HP
			6	60	LCR 15-5	100 HP	115HP	5.5 HP
			7	60	LCR 15-6	125 HP	145HP	7.5 HP
			8	60	LCR 15-7	150 HP	175HP	7.5 HP
1250(4732)	121-205 (8.34- 14.13)	FLHC 150-125-315 2900/3000 RPM	9	60	LCR 15-8	150 HP	175HP	10 HP
			10	60	LCR 15-9	200 HP	216HP	10 HP
			11	60	LCR 15-9	200 HP	216HP	10 HP
			12	60	LCR 15-10	200 HP	275HP	15 HP
			13	60	LCR 15-12	250 HP	275HP	15 HP
1500(5678)	75-139 (8.34- 14.13)	FLHC 200-150-250 2900/3000 RPM	5.5	75	LCR 15-5	100 HP	115HP	5.5 HP
			6	75	LCR 15-6	125 HP	145HP	7.5 HP
			7	75	LCR 15-7	150 HP	175HP	7.5 HP
			8	75	LCR 15-8	200 HP	216HP	10 HP
			9	75	LCR 15-9	200 HP	216HP	10 HP
1500(5678)	113-210 (7.8- 14.48)	FLHC 250-200-315 2900 RPM Motor Driven	10	75	LCR15-10	300HP	330HP	15HP
			11	75	LCR15-10	350HP	330HP	15HP
			12	75	LCR15-12	400HP	360HP	15HP
	135-203 (9.30- 13.99)	FLHC 250-200-400 (2350 RPM) Engine Driven	13	75	LCR15-12	400HP	490HP	15HP
			14	75	LCR15-14	450HP	490HP	15HP
1500(5678)	184-245 (12.68- 16.89)	FLHC 250-200-650 1470 RPM	15	75	LCR15-14	400HP	450HP	15HP
			16	75	LCR15-17	450HP	522HP	20HP
2000(7571)	80-133 (5.5-9.17)	FLHC 250-200-250 2900/3000 RPM	6	100	LCR 20-6	200 HP	217HP	10 HP
			7	100	LCR 20-7	200 HP	249HP	10 HP
	80-133 (5.5-9.17)	FLHC 250-200-250 2900 RPM Motor driven	8	100	LCR 20-8	250 HP	330HP	15 HP
			72-133 (4.96-9.17)	FLHC 250-200-315 2350 RPM Engine driven	9	100	LCR 20-10	300 HP
2000(7571)	109-209 (7.5 - 14.41)	FLHC 250-200-315 2900 RPM Motor Driven	10	100	LCR20-10	350HP	330HP	15HP
			11	100	LCR20-12	350HP	360HP	20HP
	131-202 (9.0 - 13.92)	FLHC 250-200-400 2350 RPM Engine Driven	12	100	LCR20-12	400HP	490HP	20HP
			13	100	LCR20-12	450HP	490HP	20HP



Product range

Horizontal split case fire pumps

FLHC

Horizontal Split Case Quick Selection guide

Rated Capacity in GPM / (LPM)	Pressure in PSI(Bar)	Electric & Diesel Engine Pump Model	Rated Pressure in Bar	Jockey Flow in USgpm	Jockey Pump Model	Electric Motor HP	Diesel Engine HP	Jockey Pump HP @ 2900 RPM
2000(7571)	180-242 (12.41-16.68)	FLHC 250-200-650 1470 RPM Motor Driven	13.9	100	LCR20-14	450HP	490HP	20HP
	131-202 (9.0-13.92)	FLHC 250-200-400 2350 RPM Engine Driven						
	180-242 (12.41-16.68)	FLHC 250-200-650 1470 RPM	15	100	LCR20-14	450HP	522HP	20HP
2500(9464)	93-152 (6.41-10.48)	FLHC 300-250-500 1470 RPM	6.5	125	LCR32-05-2	250HP	240HP	15HP
			7	125	LCR32-05-2	250HP	300HP	15HP
			8	125	LCR32-06-2	300HP	385HP	15HP
	93-152 (6.41-10.48)	FLHC 300-250-500 1470 RPM Motor Driven	9	125	LCR32-06	350HP	330HP	15HP
	126-199 (8.68-13.72)	FLHC 250-200-400 2350 RPM Engine Driven	10	125	LCR32-07-2	400HP	490HP	20HP
2500(9464)	152-224 (10.48 - 15.44)	FLHC 300-250-650 1470 RPM Motor Driven	11	125	LCR32-08-2	400HP	490HP	20HP
	126-199 (8.68 - 13.72)	FLHC 250-200-400 (2350 RPM) Engine Driven	12	125	LCR32-08	450HP	490HP	20HP
3000(11356)	90-151 (6.2-10.41)	FLHC 300-250-500 1470 RPM	6.5	150	LCR 32-05	250HP	300HP	15HP
			7	150	LCR 32-06-2	300HP	300HP	15HP
			8	150	LCR32-07-2	350HP	385HP	20HP
			9	150	LCR32-07	400HP	450HP	20HP
			10	150	LCR32-08	450HP	522HP	20HP

LUBI INDUSTRIES LLP

Near Kalyan Mills, Naroda Road, Ahmedabad-380 025, INDIA.
Phone : +91 - 79 - 61700100, Fax No. :+91 - 79 - 61700399.

Sales Enquiries: indsales@lubipumps.com, expsales@lubipumps.com

www.lubipumps.com

Product Improvement is a continuous process at 'LUBI'. The data given in this publication is therefore subject to revision.

01.00.120920.0184



Customer Care Number : 9824200800