

## Performance Range

- Flow rate up to 1000 l/min. (60 m<sup>3</sup>/h)
- Dynamic head up to 20 m.

## Applications

- Drainage of sewage from the building basements, hotel industry, waste water from factories.
- Drainage of sewage from industrial process factories.
- Emptying of septic tanks, cesspits and sewage pump stations.
- Pumping surface and drainage water from garages and sprinkler systems.

## Features

- A precision manufactured motor is achieved utilizing a laminated sheet steel production process combined with the highest standard of quality control. The stator and wiring is impregnated with varnish and then heat dried in an industrial oven. This ensures a 100% quality manufactured motor with stable characteristics and a high efficiency.
- Standard accessories include: VCT cable with an epoxy resin sealed stainless steel cable base, AC thermal motor protector, dual mechanical seal and lip seal.

## Special Features on Request

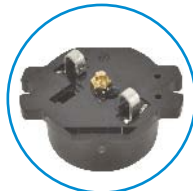
- Other voltages, Available in 60Hz.

## Direction of Rotation

- Clockwise as seen from the motor rear end.

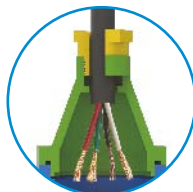
## Thermal overload protector

- Equipped with Automatic reset motor protector, prevents motor from burning due to high temperature/phase failure/voltage drop and lock impeller.



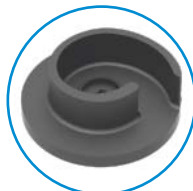
## Cable base

- Epoxy resin seal cable base to prevent water intrusion into motor through the cable wire.



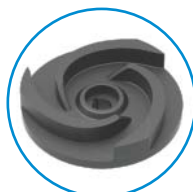
## P Type Impeller

- Semi-open impeller cutting foreign particles, and preventing clog by solid media.



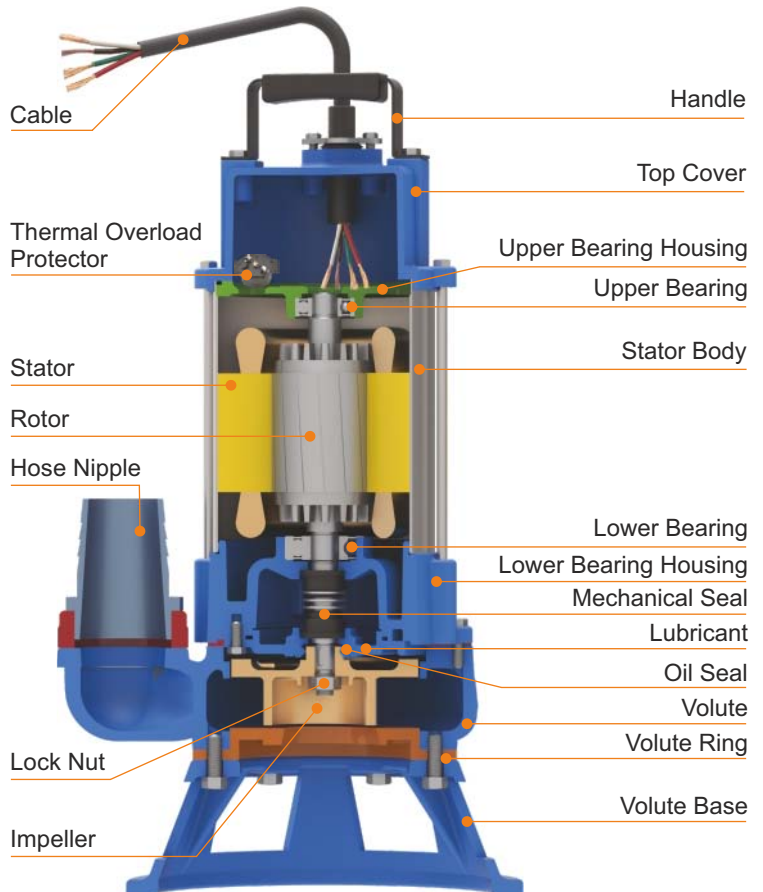
## U Type Impeller

- This impeller can generate rapid rotating vortex to handle fluid mixed with long fiber, the majority of abrasive solids do not touch impeller to minimize impeller wear.

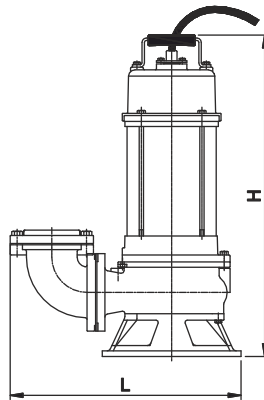


## Specification

Diameter(mm)		50 - 80	
Pumping liquid	Ambient temp	Max. +50°C	
	Liquid temp	0°C to +50°C	
	Liquid nature	Suitable for sewage waste water (with or without solids) from septic tanks, building basements and waste water from factories.	
Pump	Structure	Impeller	Semi - open
		M.seal	Double Mechanical seal
		Bearing	Ball type bearing
	Material	Impeller	Grey Iron
		Volute	Grey Iron
		Upper cover	Grey Iron
		Volute base	Grey Iron
	M.seal	Motor side	Carbon v/s Ceramic (0.75 - 2.2 kW)
Pump side		Carbon v/s Ceramic (0.75 kW) Silicon Carbide v/s Silicon Carbide (1.5 - 2.2 kW)	
Motor	Insulation		F Class
	Frequency		50 Hz
	Thermal Protector		Automatic reset motor protector
	Material	Stator body	S.S. AISI 304
		Shaft	S.S. AISI 410
		Cable	PVC
Protection		IP 68	
Duty		S1 - When pump is completely submerged. S3 - When pump is partially submerged.	
Voltage		1 Ph. 230 V +5%/-15%, 3 Ph. 400 V +5%/-15%	



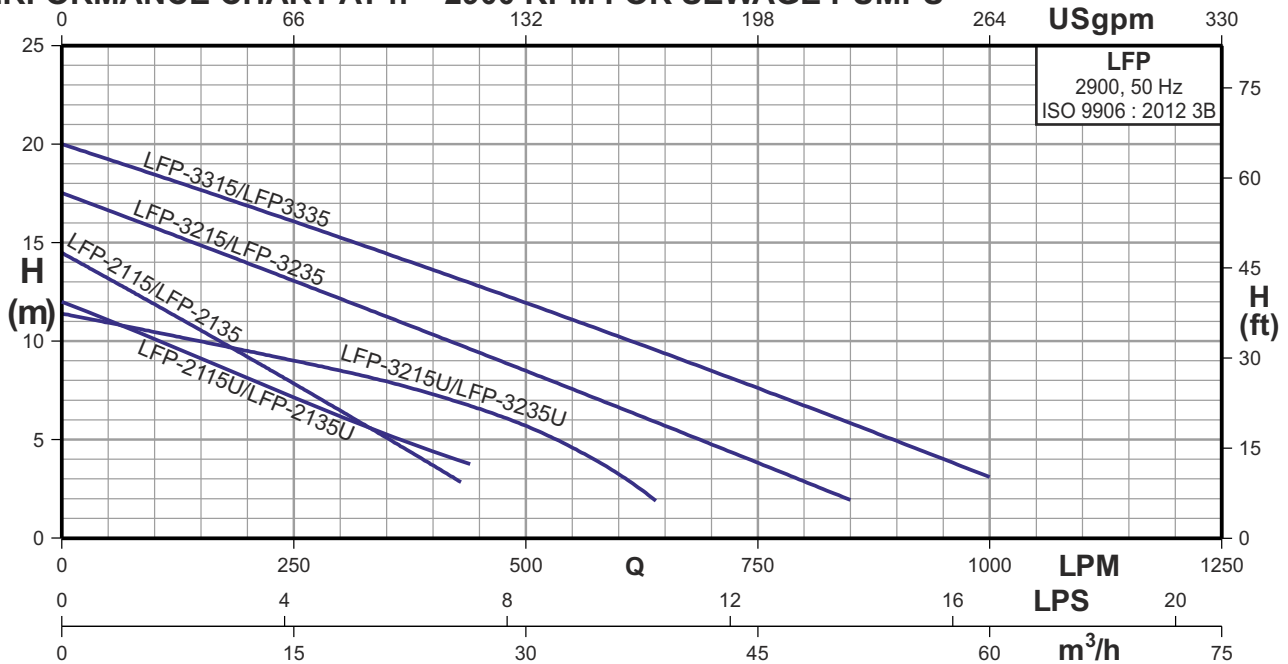
## General Pump Features



## DIMENSIONS

Model		Disc. mm (Inch)	Impeller Type	Dimensions (mm)			Solid Passage (mm)	Net Weight (kg.)	Gross Weight (kg.)	Volume (m <sup>3</sup> )	Cable data cable x core x size (mm <sup>2</sup> ) x length (m) x Material
Single Phase	Three Phase			Length	Width	Height					
LFP-2115/2115F	-	50 (2")	P	304	235	475	23	21.0	23.0	0.072	1 x 3 x 1.0 x 5 x PVC
-	LFP-2135/2135F			304	235	475		20.0	22.0	0.072	1 x 4 x 1.0 x 5 x PVC
LFP-2115U/2115UF	-	50 (2")	U	265	192	455	35	21.0	23.0	0.072	1 x 3 x 1.0 x 5 x PVC
-	LFP-2135U/2135UF			265	192	455		20.0	22.0	0.072	1 x 4 x 1.0 x 5 x PVC
LFP-3215/3215F	-	80 (3")	P	432	260	600	32	44.0	71.0	0.179	1 x 3 x 2.0 x 8 x PVC
-	LFP-3235/3235F			432	260	505		40.0	67.0	0.179	1 x 4 x 1.8 x 8 x PVC
LFP-3315/3315F	-	80 (3")	P	432	260	620	35	48.0	73.0	0.179	1 x 3 x 3.5 x 8 x PVC
-	LFP-3335/3335F			432	260	530		43.0	69.0	0.179	1 x 4 x 1.8 x 8 x PVC
LFP-3215U/3215UF	-	80 (3")	U	408	258	610	15	44.0	71.0	0.179	1 x 3 x 2.0 x 8 x PVC
-	LFP-3235U/3235UF			408	258	530		40.0	67.0	0.179	1 x 4 x 1.8 x 8 x PVC

## PERFORMANCE CHART AT n = 2900 RPM FOR SEWAGE PUMPS



## PERFORMANCE DATA AT n = 2900 RPM

Model		Power		Start Method	m <sup>3</sup> /h	3	6	12	18	24	36	48	60									
Single Phase	Three Phase	kW	HP																			
LFP-2115/2115F	-	0.75	1.0	Capacitor	H (m)	50	100	200	300	400	600	800	1000									
-	LFP-2135/2135F			13.2										12	9.2	6.5	3.7	-	-	-		
LFP-2115U/2115UF	-	0.75	1.0	Capacitor										11	10.2	8.1	6.3	4.4	-	-	-	
-	LFP-2135U/2135UF			Direct										16.6	15.8	14	12.1	10.3	6.5	2.9	-	
LFP-3215/3215F	-	1.50	2.0	Capacitor										19.3	18.5	16.9	15.3	13.6	10.3	6.7	3.2	
-	LFP-3235/3235F			Direct										10.9	10.5	9.5	8.5	7.3	3.2	-	-	
LFP-3315/3315F	-	2.20	3.0	Capacitor																		
-	LFP-3335/3335F			Direct																		
LFP-3215U/3215UF	-	1.50	2.0	Capacitor																		
-	LFP-3235U/3235UF			Direct																		

Note : Subscript "F" pumps will be provided with a float switch.