

# LCS SERIES

Close-coupled stainless steel centrifugal pumps  
50 Hz



## INTRODUCTION

LCS are single stage close-coupled pumps with suction and discharge flanges conform to PN 16 as per DIN standards EN 1092-2. In a broad flow range it has high operating efficiency and low operating cost suitable for water supply purified-water system and come industrial applications such as medicine, food, fine chemical industry, papermaking, rinsing, spraying, etc, it can also be used when liquid being pumped is not corrosive to AISI 304.

## APPLICATIONS

- Water Supply.
- Pressure boiler feeding.
- Pure water treating systems.
- Pharmaceutical and food stuff.
- Refining chemical industries.
- Industrial washing and sprinkler system.

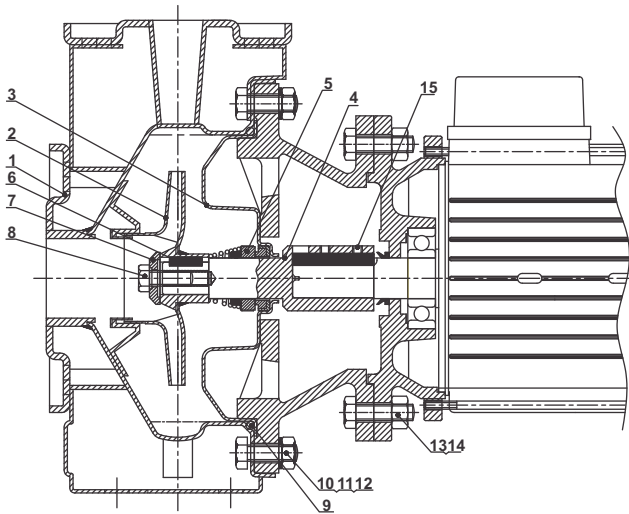
## OPERATING CONDITIONS

Max. working pressure: 10 bar

Mechanical shaft seal working temperature:

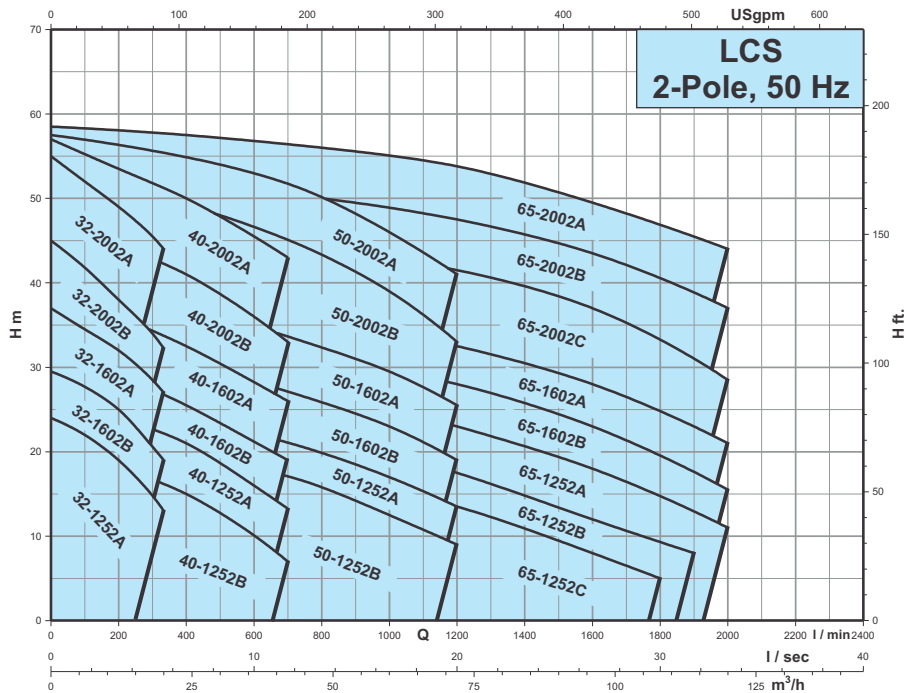
- With Carbon/Sic/Viton : -0°C to +140°C

## SECTIONAL DRAWING & MATERIALS



POS.	COMPONENT	MATERIAL
1	Volute casing	AISI 304
2	Impeller	AISI 304
3	Back cover	AISI 304
4	Stub shaft	AISI 304
5	Mechanical shaft seal	Carbon/Sic/Viton
6	Key	AISI 304
7	Impeller washer	AISI 304
8	Impeller lock pin	AISI 304
9	O-ring	Nitrile rubber
10	Hex pin	AISI 304
11	Washer	AISI 304
12	Hex nut	AISI 304
13	Hex pin	Carbon steel
14	Hex nut	Carbon steel
15	Grub screw	AISI 410

## PERFORMANCE RANGE



## LUBI INDUSTRIES LLP

Near Kalyan Mills, Naroda Road, Ahmedabad-380 025, INDIA.

Phone : +91 - 79 - 61700100, Fax No. :+91 - 79 - 61700399.

Sales Enquiries: [indsales@lubipumps.com](mailto:indsales@lubipumps.com), [expsales@lubipumps.com](mailto:expsales@lubipumps.com)

[www.lubipumps.com](http://www.lubipumps.com)

Product Improvement is a continuous process at 'LUBI'. The data given in this publication is therefore subject to revision.

01.00.211118.0121



ISO 9001



ISO 14001

Customer Care Number : 09824200800